

# Hunter Area Early Childhood Intervention Service Directory



# Contents

<b>Forward</b>	3
<b>Further Information</b>	4
<b>Information, Referral and Funding Services</b>	
Diversity Learning Centre	6
Early Intervention Information and Service Coordination Agency (EIISCA)	7
Inclusion Support Agency Hunter	9
Supporting Children with Additional Needs Scheme (SCAN)	11
<b>Community Early Childhood Intervention Services</b>	
Autism Spectrum Australia (Aspect) Building Blocks Hunter	13
Autism Spectrum Australia (Aspect) Hunter School for Children with Autism	15
Early Links	17
Firstchance Early Childhood Intervention Program	19
Hunter Prelude Early Intervention Centre	22
RIDBC Hunter	24
St. Dominic's Centre for Hearing Impaired Children	26
Stuart Centre, Children's Services Program	28
Vision Australia	30
<b>Ageing Disability and Home Care (ADHC)</b>	
Community Support Team – Hunter Region	32
<b>NSW Department of Education and Training (DET)</b>	
Early Intervention Program	34
Itinerant Support Teacher: Early Intervention	37
Itinerant Support Teachers: Hearing Impairment	39
Itinerant Support Teachers: Vision Impairment	41
<b>Hunter New England Health</b>	
Child and Adolescent Mental Health Service	43
Child and Family Health Team	45
Child and Family Health Nursing	47
First Steps Parenting Centre	50
Hunter Genetics Service	52
Paediatric Brain Injury Rehabilitation Team	54
Paediatric Occupational Therapy Department: John Hunter Children's Hospital	56
Paediatric Outpatient Clinics	58
Paediatric Physiotherapy Department: John Hunter Children's Hospital	59
Paediatric Speech Pathology Department: John Hunter Children's Hospital	61
Paediatric Speech Pathology, Greater Newcastle Sector, Community Based Services	63
Paediatric Speech Pathology, Lower Hunter Cluster	65
<b>Other Services for Families</b>	
<b>Respite Services</b>	
Commonwealth Respite and Carelink Centre – Hunter	67
Lower Hunter Temporary Care	69
Newcastle Temporary Care Ltd	71
<b>Audiometry Services</b>	
Australian Hearing	73
<b>Therapy Services</b>	
Newcastle/Lake Macquarie Physiotherapy Home-Based Support Program	75
Speech Pathology Clinic, School of Humanities and Social Sciences	77
<b>Support for Families</b>	
Family InSight Inc	79
Home Start Program	81
Intensive Family Support Options (IFSO), Stuart Centre	83

## Foreword

This is the latest edition of the **Hunter Area Early Childhood Intervention Service Directory**. This directory was previously printed in 2004 and 2007; it is an ongoing project of the Early Childhood Intervention Coordination Program (**ECICP**) Hunter Area Committee with the support of the ECICP Hunter Valley (Rural) and Greater Newcastle Sub Committees.

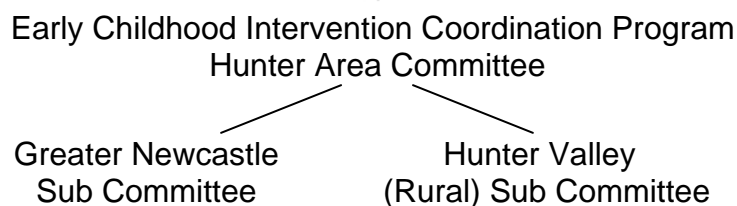
The directory is designed for those working with families who have young children (birth to school entry age) with a disability, developmental delay or additional needs. It provides information on a range of early intervention services available in the Hunter Area, including: information, education, medical, allied health, respite and family support services.

Any suggestions on other appropriate services to be included in the directory or feedback on the content, etc. are welcome. Please forward these to the Administration Assistant, ECICP Hunter Area Committee via email to [ecicp@hnehealth.nsw.gov.au](mailto:ecicp@hnehealth.nsw.gov.au) or fax to 4925 7907.

**Alterations to the directory should be forwarded to this email or fax address also.**

The ECICP Hunter Area Committee, Greater Newcastle and Hunter Valley (Rural) Sub Committees include representatives from Ageing, Disability and Home Care (ADHC), Hunter New England Health (HNEH), the Department of Education and Training (DET), Community Services, Housing NSW and community agencies funded by these departments.

The ECICP is working towards services that are flexible, accessible and coordinated.



Enquiries relating to the directory, including requests for an electronic copy, can be sent via email to the Administration Assistant, ECICP Hunter Area Committee at [ecicp@hnehealth.nsw.gov.au](mailto:ecicp@hnehealth.nsw.gov.au) or phone the EIISCA office on 4925 7847.

© Please note that there are no copyright restrictions on this directory. Entries have been presented in a simple format to allow for photocopying and distribution. A regularly updated version of this directory can be found and downloaded at <http://www.ecicphunter.com.au>

*The Hunter Area Early Childhood Intervention Service Directory project is funded for ECICP by Ageing, Disability and Home Care (ADHC).*

*This directory has information on services that provide **direct** support for families who have young children with a disability, developmental delay or additional needs.*



## **FURTHER INFORMATION**

*There are many other services and groups that may be able to provide support for particular circumstances, such as the following:*

*Support Groups  
Equipment Services  
Respite Services  
Transport Services*

*For up to date information about other services contact:*

**D.A.**  
**(Disability Advocacy NSW)**

Website: [www.da.org.au](http://www.da.org.au)

**Phone: 1300 365 085 or 4927 0111**

**Fax: 4927 0114**



*Please turn over for more information services*

# ***FURTHER INFORMATION (continued)***

*There are many specific services for members of the Aboriginal and Torres Strait Islander (ATSI) community and for people from culturally and linguistically diverse (CALD) backgrounds.*

*For more information relating to these services please contact the following workers within Hunter New England Health Service:*

## ***Aboriginal Liaison Officers***

<i>Maitland</i>	<i>Maitland Hospital</i>	<i>4939 2504</i>
<i>Muswellbrook</i>	<i>Community Health Centre</i>	<i>6542 2065</i>
<i>Newcastle</i>	<i>James Fletcher Hospital</i>	<i>4924 6508</i>
<i>New Lambton</i>	<i>John Hunter Hospital</i>	<i>4921 4182</i>

## ***Multicultural Liaison Officers***

<i>Kaleidoscope, Children's Health Network</i>	<i>4924 6283</i>
<i>John Hunter Hospital</i>	<i>4921 4497</i>
<i>Maitland Hospital</i>	<i>4939 2406</i>
<i>Women's Health</i>	<i>4924 6283</i>

***Please Note:*** *All government departments have designated staff that support families from ATSI and CALD backgrounds. When contacting departments be sure to ask to speak to these specific liaison officers if appropriate.*

## ***EARLY CHILDHOOD INTERVENTION INFOLINE*** ***1300 656 865***

*The Early Childhood Intervention Infoline is a free telephone service which provides information to NSW families on services that support children, aged between birth and 6 years, with a delay in development or a disability. Relevant limited written resources are also available.*

## ***KIDS KARE LINE (healthDirect)*** ***4921 2800***

*A telephone advisory helpline available 24 hours a day, 7 days a week designed to help make informed decisions about health.*

## ***COMMONWEALTH CARELINK CENTRE*** ***1800 052 222***

*Commonwealth Carelink Centres are information centres for older people, people with disabilities and those who provide care and services. Centres provide free and confidential information on community aged care, disability and other support services available locally, interstate or anywhere within Australia.*